

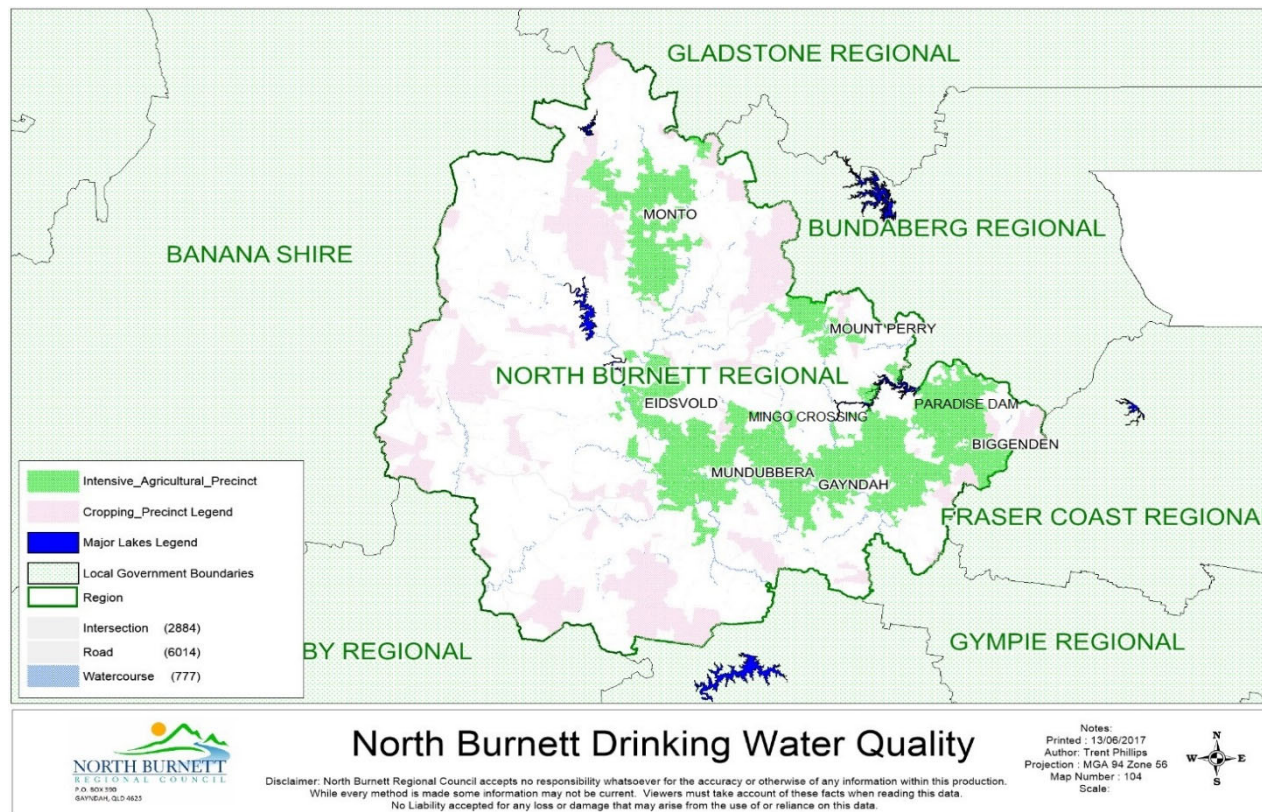


NORTH BURNETT REGIONAL COUNCIL

KEY PERFORMANCE INDICATORS 2022 -2023

SPID:490

North Burnett Regional Council is required by the Department of Regional Development, Manufacturing and Water to submit annual data for water, sewerage and recycled water key performance indicators. Results presented in the following tables were reported through the SWIM Reporting System for the period of 1 July 2022 to 30 June 2023. The below results give a general overview of the water, sewerage and recycled water operations for Council.



1 POTABLE WATER SUPPLY SCHEMES

SCHEME	SCHEME LONG NAME	KPI CODE	SWIM CODE	INDICATOR TITLE	VALUE	UNITS
Paradise Dam Water	Paradise Dam Caravan Park Potable Water Supply Area	QG1.4a	AS1	Number water treatment plants: providing full treatment	1	Count
Paradise Dam Water	Paradise Dam Caravan Park Potable Water Supply Area	QG1.1	AS2	Length water mains	0	km
Paradise Dam Water	Paradise Dam Caravan Park Potable Water Supply Area	QG1.4b	AS47	Capacity of water treatment plants	0.07	ML/day
Paradise Dam Water	Paradise Dam Caravan Park Potable Water Supply Area	QG1.7	AS48	Total potable water storage volume	0.05	ML
Paradise Dam Water	Paradise Dam Caravan Park Potable Water Supply Area	QG4.1(va lue)	PR3	Fixed charge: water value	NR	\$/annum
Paradise Dam Water	Paradise Dam Caravan Park Potable Water Supply Area	QG4.1(te xt)	PR5	Fixed charge: water description	NR	Text
Paradise Dam Water	Paradise Dam Caravan Park Potable Water Supply Area	QG1.8	WA1	Volume water sourced: surface water	0	ML
Paradise Dam Water	Paradise Dam Caravan Park Potable Water Supply Area	QG1.9a	WA2	Volume water sourced: groundwater	NR	ML
Paradise Dam Water	Paradise Dam Caravan Park Potable Water Supply Area	QG1.6a	WA225	Volume potable water produced at a water treatment plant	0.3	ML
Paradise Dam Water	Paradise Dam Caravan Park Potable Water Supply Area	QG1.17a	WA32	Volume potable water supplied: residential	0	ML
Paradise Dam Water	Paradise Dam Caravan Park Potable Water Supply Area	QG1.18a	WA34	Volume potable water supplied: non-residential	0.2	ML
Paradise Dam Water	Paradise Dam Caravan Park Potable Water Supply Area	QG1.10	WA61	Volume water sourced: desalination marine water	NR	ML
Paradise Dam Water	Paradise Dam Caravan Park Potable Water Supply Area	QG2.10a	WS11	Water restriction duration: PWCM	364	days
Paradise Dam Water	Paradise Dam Caravan Park Potable Water Supply Area	QG2.10b	WS12	Water restriction duration: Level 1	NR	days
Paradise Dam Water	Paradise Dam Caravan Park Potable Water Supply Area	QG2.10c	WS13	Water restriction duration: Level 2	NR	days
Paradise Dam Water	Paradise Dam Caravan Park Potable Water Supply Area	QG2.10d	WS14	Water restriction duration: Level 3	NR	days

SCHEME	SCHEME LONG NAME	KPI CODE	SWIM CODE	INDICATOR TITLE	VALUE	UNITS
Paradise Dam Water	Paradise Dam Caravan Park Potable Water Supply Area	QG2.10e	WS15	Water restriction duration: Level 4	NR	days
Paradise Dam Water	Paradise Dam Caravan Park Potable Water Supply Area	QG2.10f	WS16	Water restriction duration: Level 5	NR	days
Biggenden Water	Biggenden Town Potable Water Supply Area	QG1.4a	AS1	Number water treatment plants: providing full treatment	1	Count
Biggenden Water	Biggenden Town Potable Water Supply Area	QG1.1	AS2	Length water mains	11.9	km
Biggenden Water	Biggenden Town Potable Water Supply Area	QG1.4b	AS47	Capacity of water treatment plants	1	ML/day
Biggenden Water	Biggenden Town Potable Water Supply Area	QG1.7	AS48	Total potable water storage volume	2.185	ML
Biggenden Water	Biggenden Town Potable Water Supply Area	QG1.23	AS56	Volume water lost: potable water	12.8	ML
Biggenden Water	Biggenden Town Potable Water Supply Area	QG4.5	AS8	Water main breaks per 100 km water main	67.2	per 100 km water main
Biggenden Water	Biggenden Town Potable Water Supply Area	QG4.12	CS10	Water service complaints per 1000 connections	0	per 1000 connections
Biggenden Water	Biggenden Town Potable Water Supply Area	QG4.14	CS12	Water and sewerage billing and account complaints per 1000 connections	0	per 1000 connections
Biggenden Water	Biggenden Town Potable Water Supply Area	QG4.11	CS13	Water and sewerage complaints (all) per 1000 connections	2.3	per 1000 connections
Biggenden Water	Biggenden Town Potable Water Supply Area	QG4.7	CS17	Average frequency unplanned interruptions: water	287.4	per 1000 connections
Biggenden Water	Biggenden Town Potable Water Supply Area	QG1.13	CS2	Connected residential properties: water	0.371	000s
Biggenden Water	Biggenden Town Potable Water Supply Area	QG1.14	CS3	Connected non-residential properties: water	0.064	000s
Biggenden Water	Biggenden Town Potable Water Supply Area	QG4.8a	CS66	Percent CSS response target met: water incidents	100	%
Biggenden Water	Biggenden Town Potable Water Supply Area	QG4.10	CS9	Water quality complaints per 1000 connections	2.3	per 1000 connections
Biggenden Water	Biggenden Town Potable Water Supply Area	QG4.1(va lue)	PR3	Fixed charge: water value	684	\$/annum

SCHEME	SCHEME LONG NAME	KPI CODE	SWIM CODE	INDICATOR TITLE	VALUE	UNITS
Biggenden Water	Biggenden Town Potable Water Supply Area	QG4.1(text)	PR5	Fixed charge: water description	Per Connection	Text
Biggenden Water	Biggenden Town Potable Water Supply Area	QG1.8	WA1	Volume water sourced: surface water	11.9	ML
Biggenden Water	Biggenden Town Potable Water Supply Area	QG1.9a	WA2	Volume water sourced: groundwater	75.5	ML
Biggenden Water	Biggenden Town Potable Water Supply Area	QG1.5	WA201	Maximum daily demand	0.6	ML/day
Biggenden Water	Biggenden Town Potable Water Supply Area	QG1.21	WA223	Volume all water imported: internal and external	NR	ML
Biggenden Water	Biggenden Town Potable Water Supply Area	QG1.22	WA224	Volume all water exported: internal and external	0	ML
Biggenden Water	Biggenden Town Potable Water Supply Area	QG1.6a	WA225	Volume potable water produced at a water treatment plant	79.9	ML
Biggenden Water	Biggenden Town Potable Water Supply Area	QG1.17a	WA32	Volume potable water supplied: residential	50	ML
Biggenden Water	Biggenden Town Potable Water Supply Area	QG1.18a	WA34	Volume potable water supplied: non-residential	16.7	ML
Biggenden Water	Biggenden Town Potable Water Supply Area	QG1.10	WA61	Volume water sourced: desalination marine water	NR	ML
Biggenden Water	Biggenden Town Potable Water Supply Area	QG1.12	WA7	Volume water sourced: all	87.4	ML
Biggenden Water	Biggenden Town Potable Water Supply Area	QG2.10a	WS11	Water restriction duration: PWCM	365	days
Biggenden Water	Biggenden Town Potable Water Supply Area	QG2.10b	WS12	Water restriction duration: Level 1	0	days
Biggenden Water	Biggenden Town Potable Water Supply Area	QG2.10c	WS13	Water restriction duration: Level 2	0	days
Biggenden Water	Biggenden Town Potable Water Supply Area	QG2.10d	WS14	Water restriction duration: Level 3	0	days
Biggenden Water	Biggenden Town Potable Water Supply Area	QG2.10e	WS15	Water restriction duration: Level 4	0	days
Biggenden Water	Biggenden Town Potable Water Supply Area	QG2.10f	WS16	Water restriction duration: Level 5	0	days
Biggenden Water	Biggenden Town Potable Water Supply Area	QG2.11a	WS17	Has asset management planning been undertaken in the last 10 yrs?	yes	yes/no

SCHEME	SCHEME LONG NAME	KPI CODE	SWIM CODE	INDICATOR TITLE	VALUE	UNITS
Biggenden Water	Biggenden Town Potable Water Supply Area	QG2.11b	WS18	Has drought management planning been undertaken in the last 10 yrs?	yes	yes/no
Biggenden Water	Biggenden Town Potable Water Supply Area	QG2.11c	WS19	Has water demand forecasts been developed or reviewed in the last 5 yrs?	yes	yes/no
Biggenden Water	Biggenden Town Potable Water Supply Area	QG2.11d	WS20	Has assessment of key capacity constraints of water infrastructure been undertaken in last 10 yrs?	yes	yes/no
Biggenden Water	Biggenden Town Potable Water Supply Area	QG2.11e	WS21	Has the timing for potential future supply augmentation been assessed in the last 10 yrs?	yes	yes/no
Biggenden Water	Biggenden Town Potable Water Supply Area	QG2.12	WS22	Months water supply remaining as at 30 June (KPI level)	5	1,2,3,4,5,6
Biggenden Water	Biggenden Town Potable Water Supply Area	QG2.13	WS23	Confidence water demand will be met: next 18 mths	high	high,fair,unsure, low,very low
Biggenden Water	Biggenden Town Potable Water Supply Area	QG2.14	WS24	Confidence water demand will be met: next 5 yrs	high	high,fair,unsure, low,very low
Biggenden Water	Biggenden Town Potable Water Supply Area	QG2.3	WS3	Available contingency supplies	yes	yes/no
Eidsvold Water	Eidsvold Town Potable Water Supply Area	QG1.4a	AS1	Number water treatment plants: providing full treatment	1	Count
Eidsvold Water	Eidsvold Town Potable Water Supply Area	QG1.1	AS2	Length water mains	27.1	km
Eidsvold Water	Eidsvold Town Potable Water Supply Area	QG1.4b	AS47	Capacity of water treatment plants	1.24	ML/day
Eidsvold Water	Eidsvold Town Potable Water Supply Area	QG1.7	AS48	Total potable water storage volume	1.3	ML
Eidsvold Water	Eidsvold Town Potable Water Supply Area	QG1.23	AS56	Volume water lost: potable water	13.1	ML
Eidsvold Water	Eidsvold Town Potable Water Supply Area	QG4.5	AS8	Water main breaks per 100 km water main	22.2	per 100 km water main
Eidsvold Water	Eidsvold Town Potable Water Supply Area	QG4.12	CS10	Water service complaints per 1000 connections	0	per 1000 connections
Eidsvold Water	Eidsvold Town Potable Water Supply Area	QG4.14	CS12	Water and sewerage billing and account complaints per 1000 connections	3.1	per 1000 connections
Eidsvold Water	Eidsvold Town Potable Water Supply Area	QG4.11	CS13	Water and sewerage complaints (all) per 1000 connections	6.2	per 1000 connections

SCHEME	SCHEME LONG NAME	KPI CODE	SWIM CODE	INDICATOR TITLE	VALUE	UNITS
Eidsvold Water	Eidsvold Town Potable Water Supply Area	QG4.7	CS17	Average frequency unplanned interruptions: water	201.2	per 1000 connections
Eidsvold Water	Eidsvold Town Potable Water Supply Area	QG1.13	CS2	Connected residential properties: water	0.254	000s
Eidsvold Water	Eidsvold Town Potable Water Supply Area	QG1.14	CS3	Connected non-residential properties: water	0.069	000s
Eidsvold Water	Eidsvold Town Potable Water Supply Area	QG4.8a	CS66	Percent CSS response target met: water incidents	100	%
Eidsvold Water	Eidsvold Town Potable Water Supply Area	QG4.10	CS9	Water quality complaints per 1000 connections	3.1	per 1000 connections
Eidsvold Water	Eidsvold Town Potable Water Supply Area	QG4.1(va lue)	PR3	Fixed charge: water value	684	\$/annum
Eidsvold Water	Eidsvold Town Potable Water Supply Area	QG4.1(te xt)	PR5	Fixed charge: water description	Per Connectio n	Text
Eidsvold Water	Eidsvold Town Potable Water Supply Area	QG1.8	WA1	Volume water sourced: surface water	NR	ML
Eidsvold Water	Eidsvold Town Potable Water Supply Area	QG1.9a	WA2	Volume water sourced: groundwater	142.4	ML
Eidsvold Water	Eidsvold Town Potable Water Supply Area	QG1.5	WA201	Maximum daily demand	0.7	ML/day
Eidsvold Water	Eidsvold Town Potable Water Supply Area	QG1.21	WA223	Volume all water imported: internal and external	NR	ML
Eidsvold Water	Eidsvold Town Potable Water Supply Area	QG1.22	WA224	Volume all water exported: internal and external	0	ML
Eidsvold Water	Eidsvold Town Potable Water Supply Area	QG1.6a	WA225	Volume potable water produced at a water treatment plant	123.9	ML
Eidsvold Water	Eidsvold Town Potable Water Supply Area	QG1.17a	WA32	Volume potable water supplied: residential	71.6	ML
Eidsvold Water	Eidsvold Town Potable Water Supply Area	QG1.18a	WA34	Volume potable water supplied: non-residential	38.5	ML
Eidsvold Water	Eidsvold Town Potable Water Supply Area	QG1.10	WA61	Volume water sourced: desalination marine water	NR	ML
Eidsvold Water	Eidsvold Town Potable Water Supply Area	QG1.12	WA7	Volume water sourced: all	142.4	ML
Eidsvold Water	Eidsvold Town Potable Water Supply Area	QG2.10a	WS11	Water restriction duration: PWCM	365	days

SCHEME	SCHEME LONG NAME	KPI CODE	SWIM CODE	INDICATOR TITLE	VALUE	UNITS
Eidsvold Water	Eidsvold Town Potable Water Supply Area	QG2.10b	WS12	Water restriction duration: Level 1	0	days
Eidsvold Water	Eidsvold Town Potable Water Supply Area	QG2.10c	WS13	Water restriction duration: Level 2	0	days
Eidsvold Water	Eidsvold Town Potable Water Supply Area	QG2.10d	WS14	Water restriction duration: Level 3	0	days
Eidsvold Water	Eidsvold Town Potable Water Supply Area	QG2.10e	WS15	Water restriction duration: Level 4	0	days
Eidsvold Water	Eidsvold Town Potable Water Supply Area	QG2.10f	WS16	Water restriction duration: Level 5	0	days
Eidsvold Water	Eidsvold Town Potable Water Supply Area	QG2.11a	WS17	Has asset management planning been undertaken in the last 10 yrs?	yes	yes/no
Eidsvold Water	Eidsvold Town Potable Water Supply Area	QG2.11b	WS18	Has drought management planning been undertaken in the last 10 yrs?	yes	yes/no
Eidsvold Water	Eidsvold Town Potable Water Supply Area	QG2.11c	WS19	Has water demand forecasts been developed or reviewed in the last 5 yrs?	yes	yes/no
Eidsvold Water	Eidsvold Town Potable Water Supply Area	QG2.11d	WS20	Has assessment of key capacity constraints of water infrastructure been undertaken in last 10 yrs?	yes	yes/no
Eidsvold Water	Eidsvold Town Potable Water Supply Area	QG2.11e	WS21	Has the timing for potential future supply augmentation been assessed in the last 10 yrs?	yes	yes/no
Eidsvold Water	Eidsvold Town Potable Water Supply Area	QG2.12	WS22	Months water supply remaining as at 30 June (KPI level)	5	1,2,3,4,5,6
Eidsvold Water	Eidsvold Town Potable Water Supply Area	QG2.13	WS23	Confidence water demand will be met: next 18 mths	high	high,fair,unsure, low,very low
Eidsvold Water	Eidsvold Town Potable Water Supply Area	QG2.14	WS24	Confidence water demand will be met: next 5 yrs	high	high,fair,unsure, low,very low
Eidsvold Water	Eidsvold Town Potable Water Supply Area	QG2.3	WS3	Available contingency supplies	yes	yes/no
Gayndah Water	Gayndah Town Potable Water Supply Area	QG1.4a	AS1	Number water treatment plants: providing full treatment	1	Count
Gayndah Water	Gayndah Town Potable Water Supply Area	QG1.1	AS2	Length water mains	27.7	km
Gayndah Water	Gayndah Town Potable Water Supply Area	QG1.4b	AS47	Capacity of water treatment plants	4	ML/day

SCHEME	SCHEME LONG NAME	KPI CODE	SWIM CODE	INDICATOR TITLE	VALUE	UNITS
Gayndah Water	Gayndah Town Potable Water Supply Area	QG1.7	AS48	Total potable water storage volume	3.6	ML
Gayndah Water	Gayndah Town Potable Water Supply Area	QG1.23	AS56	Volume water lost: potable water	77.1	ML
Gayndah Water	Gayndah Town Potable Water Supply Area	QG4.5	AS8	Water main breaks per 100 km water main	10.8	per 100 km water main
Gayndah Water	Gayndah Town Potable Water Supply Area	QG4.12	CS10	Water service complaints per 1000 connections	1	per 1000 connections
Gayndah Water	Gayndah Town Potable Water Supply Area	QG4.14	CS12	Water and sewerage billing and account complaints per 1000 connections	0	per 1000 connections
Gayndah Water	Gayndah Town Potable Water Supply Area	QG4.11	CS13	Water and sewerage complaints (all) per 1000 connections	3.9	per 1000 connections
Gayndah Water	Gayndah Town Potable Water Supply Area	QG4.7	CS17	Average frequency unplanned interruptions: water	1016.6	per 1000 connections
Gayndah Water	Gayndah Town Potable Water Supply Area	QG1.13	CS2	Connected residential properties: water	0.877	000s
Gayndah Water	Gayndah Town Potable Water Supply Area	QG1.14	CS3	Connected non-residential properties: water	0.15	000s
Gayndah Water	Gayndah Town Potable Water Supply Area	QG4.8a	CS66	Percent CSS response target met: water incidents	100	%
Gayndah Water	Gayndah Town Potable Water Supply Area	QG4.10	CS9	Water quality complaints per 1000 connections	2.9	per 1000 connections
Gayndah Water	Gayndah Town Potable Water Supply Area	QG4.1(va lue)	PR3	Fixed charge: water value	684	\$/annum
Gayndah Water	Gayndah Town Potable Water Supply Area	QG4.1(te xt)	PR5	Fixed charge: water description	Per Connection	Text
Gayndah Water	Gayndah Town Potable Water Supply Area	QG1.8	WA1	Volume water sourced: surface water	392.4	ML
Gayndah Water	Gayndah Town Potable Water Supply Area	QG1.9a	WA2	Volume water sourced: groundwater	NR	ML
Gayndah Water	Gayndah Town Potable Water Supply Area	QG1.5	WA201	Maximum daily demand	1.9	ML/day
Gayndah Water	Gayndah Town Potable Water Supply Area	QG1.21	WA223	Volume all water imported: internal and external	NR	ML
Gayndah Water	Gayndah Town Potable Water Supply Area	QG1.22	WA224	Volume all water exported: internal and external	5.6	ML

SCHEME	SCHEME LONG NAME	KPI CODE	SWIM CODE	INDICATOR TITLE	VALUE	UNITS
Gayndah Water	Gayndah Town Potable Water Supply Area	QG1.6a	WA225	Volume potable water produced at a water treatment plant	358.6	ML
Gayndah Water	Gayndah Town Potable Water Supply Area	QG1.17a	WA32	Volume potable water supplied: residential	181.8	ML
Gayndah Water	Gayndah Town Potable Water Supply Area	QG1.18a	WA34	Volume potable water supplied: non-residential	97.9	ML
Gayndah Water	Gayndah Town Potable Water Supply Area	QG1.10	WA61	Volume water sourced: desalination marine water	NR	ML
Gayndah Water	Gayndah Town Potable Water Supply Area	QG1.12	WA7	Volume water sourced: all	392.4	ML
Gayndah Water	Gayndah Town Potable Water Supply Area	QG2.10a	WS11	Water restriction duration: PWCM	365	days
Gayndah Water	Gayndah Town Potable Water Supply Area	QG2.10b	WS12	Water restriction duration: Level 1	0	days
Gayndah Water	Gayndah Town Potable Water Supply Area	QG2.10c	WS13	Water restriction duration: Level 2	0	days
Gayndah Water	Gayndah Town Potable Water Supply Area	QG2.10d	WS14	Water restriction duration: Level 3	0	days
Gayndah Water	Gayndah Town Potable Water Supply Area	QG2.10e	WS15	Water restriction duration: Level 4	0	days
Gayndah Water	Gayndah Town Potable Water Supply Area	QG2.10f	WS16	Water restriction duration: Level 5	0	days
Gayndah Water	Gayndah Town Potable Water Supply Area	QG2.11a	WS17	Has asset management planning been undertaken in the last 10 yrs?	yes	yes/no
Gayndah Water	Gayndah Town Potable Water Supply Area	QG2.11b	WS18	Has drought management planning been undertaken in the last 10 yrs?	yes	yes/no
Gayndah Water	Gayndah Town Potable Water Supply Area	QG2.11c	WS19	Has water demand forecasts been developed or reviewed in the last 5 yrs?	yes	yes/no
Gayndah Water	Gayndah Town Potable Water Supply Area	QG2.11d	WS20	Has assessment of key capacity constraints of water infrastructure been undertaken in last 10 yrs?	yes	yes/no
Gayndah Water	Gayndah Town Potable Water Supply Area	QG2.11e	WS21	Has the timing for potential future supply augmentation been assessed in the last 10 yrs?	yes	yes/no
Gayndah Water	Gayndah Town Potable Water Supply Area	QG2.12	WS22	Months water supply remaining as at 30 June (KPI level)	5	1,2,3,4,5,6
Gayndah Water	Gayndah Town Potable Water Supply Area	QG2.13	WS23	Confidence water demand will be met: next 18 mths	high	high,fair,unsure, low,very low

SCHEME	SCHEME LONG NAME	KPI CODE	SWIM CODE	INDICATOR TITLE	VALUE	UNITS
Gayndah Water	Gayndah Town Potable Water Supply Area	QG2.14	WS24	Confidence water demand will be met: next 5 yrs	high	high,fair,unsure, low,very low
Gayndah Water	Gayndah Town Potable Water Supply Area	QG2.3	WS3	Available contingency supplies	yes	yes/no
Mingo Crossing Water	Mingo Crossing Caravan Park Potable Water Supply Area	QG1.4a	AS1	Number water treatment plants: providing full treatment	1	Count
Mingo Crossing Water	Mingo Crossing Caravan Park Potable Water Supply Area	QG1.1	AS2	Length water mains	0	km
Mingo Crossing Water	Mingo Crossing Caravan Park Potable Water Supply Area	QG1.4b	AS47	Capacity of water treatment plants	0.03	ML/day
Mingo Crossing Water	Mingo Crossing Caravan Park Potable Water Supply Area	QG1.7	AS48	Total potable water storage volume	0.088	ML
Mingo Crossing Water	Mingo Crossing Caravan Park Potable Water Supply Area	QG1.23	AS56	Volume water lost: potable water	0.1	ML
Mingo Crossing Water	Mingo Crossing Caravan Park Potable Water Supply Area	QG4.5	AS8	Water main breaks per 100 km water main	0	per 100 km water main
Mingo Crossing Water	Mingo Crossing Caravan Park Potable Water Supply Area	QG4.12	CS10	Water service complaints per 1000 connections	0	per 1000 connections
Mingo Crossing Water	Mingo Crossing Caravan Park Potable Water Supply Area	QG4.14	CS12	Water and sewerage billing and account complaints per 1000 connections	0	per 1000 connections
Mingo Crossing Water	Mingo Crossing Caravan Park Potable Water Supply Area	QG4.11	CS13	Water and sewerage complaints (all) per 1000 connections	0	per 1000 connections
Mingo Crossing Water	Mingo Crossing Caravan Park Potable Water Supply Area	QG4.7	CS17	Average frequency unplanned interruptions: water	0	per 1000 connections
Mingo Crossing Water	Mingo Crossing Caravan Park Potable Water Supply Area	QG1.13	CS2	Connected residential properties: water	0.001	000s
Mingo Crossing Water	Mingo Crossing Caravan Park Potable Water Supply Area	QG1.14	CS3	Connected non-residential properties: water	0.001	000s
Mingo Crossing Water	Mingo Crossing Caravan Park Potable Water Supply Area	QG4.8a	CS66	Percent CSS response target met: water incidents	100	%
Mingo Crossing Water	Mingo Crossing Caravan Park Potable Water Supply Area	QG4.10	CS9	Water quality complaints per 1000 connections	0	per 1000 connections
Mingo Crossing Water	Mingo Crossing Caravan Park Potable Water Supply Area	QG4.1(va lue)	PR3	Fixed charge: water value	NR	\$/annum

SCHEME	SCHEME LONG NAME	KPI CODE	SWIM CODE	INDICATOR TITLE	VALUE	UNITS
Mingo Crossing Water	Mingo Crossing Caravan Park Potable Water Supply Area	QG4.1(text)	PR5	Fixed charge: water description	NR	Text
Mingo Crossing Water	Mingo Crossing Caravan Park Potable Water Supply Area	QG1.8	WA1	Volume water sourced: surface water	0.4	ML
Mingo Crossing Water	Mingo Crossing Caravan Park Potable Water Supply Area	QG1.9a	WA2	Volume water sourced: groundwater	NR	ML
Mingo Crossing Water	Mingo Crossing Caravan Park Potable Water Supply Area	QG1.5	WA201	Maximum daily demand	0	ML/day
Mingo Crossing Water	Mingo Crossing Caravan Park Potable Water Supply Area	QG1.21	WA223	Volume all water imported: internal and external	0.6	ML
Mingo Crossing Water	Mingo Crossing Caravan Park Potable Water Supply Area	QG1.22	WA224	Volume all water exported: internal and external	0	ML
Mingo Crossing Water	Mingo Crossing Caravan Park Potable Water Supply Area	QG1.6a	WA225	Volume potable water produced at a water treatment plant	1	ML
Mingo Crossing Water	Mingo Crossing Caravan Park Potable Water Supply Area	QG1.17a	WA32	Volume potable water supplied: residential	0	ML
Mingo Crossing Water	Mingo Crossing Caravan Park Potable Water Supply Area	QG1.18a	WA34	Volume potable water supplied: non-residential	0.9	ML
Mingo Crossing Water	Mingo Crossing Caravan Park Potable Water Supply Area	QG1.10	WA61	Volume water sourced: desalination marine water	NR	ML
Mingo Crossing Water	Mingo Crossing Caravan Park Potable Water Supply Area	QG1.12	WA7	Volume water sourced: all	1	ML
Mingo Crossing Water	Mingo Crossing Caravan Park Potable Water Supply Area	QG2.10a	WS11	Water restriction duration: PWCM	365	days
Mingo Crossing Water	Mingo Crossing Caravan Park Potable Water Supply Area	QG2.10b	WS12	Water restriction duration: Level 1	0	days
Mingo Crossing Water	Mingo Crossing Caravan Park Potable Water Supply Area	QG2.10c	WS13	Water restriction duration: Level 2	0	days
Mingo Crossing Water	Mingo Crossing Caravan Park Potable Water Supply Area	QG2.10d	WS14	Water restriction duration: Level 3	0	days
Mingo Crossing Water	Mingo Crossing Caravan Park Potable Water Supply Area	QG2.10e	WS15	Water restriction duration: Level 4	0	days
Mingo Crossing Water	Mingo Crossing Caravan Park Potable Water Supply Area	QG2.10f	WS16	Water restriction duration: Level 5	0	days
Mingo Crossing Water	Mingo Crossing Caravan Park Potable Water Supply Area	QG2.11a	WS17	Has asset management planning been undertaken in the last 10 yrs?	yes	yes/no

SCHEME	SCHEME LONG NAME	KPI CODE	SWIM CODE	INDICATOR TITLE	VALUE	UNITS
Mingo Crossing Water	Mingo Crossing Caravan Park Potable Water Supply Area	QG2.11b	WS18	Has drought management planning been undertaken in the last 10 yrs?	yes	yes/no
Mingo Crossing Water	Mingo Crossing Caravan Park Potable Water Supply Area	QG2.11c	WS19	Has water demand forecasts been developed or reviewed in the last 5 yrs?	no	yes/no
Mingo Crossing Water	Mingo Crossing Caravan Park Potable Water Supply Area	QG2.11d	WS20	Has assessment of key capacity constraints of water infrastructure been undertaken in last 10 yrs?	yes	yes/no
Mingo Crossing Water	Mingo Crossing Caravan Park Potable Water Supply Area	QG2.11e	WS21	Has the timing for potential future supply augmentation been assessed in the last 10 yrs?	yes	yes/no
Mingo Crossing Water	Mingo Crossing Caravan Park Potable Water Supply Area	QG2.12	WS22	Months water supply remaining as at 30 June (KPI level)	5	1,2,3,4,5,6
Mingo Crossing Water	Mingo Crossing Caravan Park Potable Water Supply Area	QG2.13	WS23	Confidence water demand will be met: next 18 mths	high	high,fair,unsure, low,very low
Mingo Crossing Water	Mingo Crossing Caravan Park Potable Water Supply Area	QG2.14	WS24	Confidence water demand will be met: next 5 yrs	high	high,fair,unsure, low,very low
Mingo Crossing Water	Mingo Crossing Caravan Park Potable Water Supply Area	QG2.3	WS3	Available contingency supplies	yes	yes/no
Monto Water	Monto Town Potable Water Supply Area	QG1.4a	AS1	Number water treatment plants: providing full treatment	0	Count
Monto Water	Monto Town Potable Water Supply Area	QG1.1	AS2	Length water mains	28.7	km
Monto Water	Monto Town Potable Water Supply Area	QG1.4b	AS47	Capacity of water treatment plants	NR	ML/day
Monto Water	Monto Town Potable Water Supply Area	QG1.7	AS48	Total potable water storage volume	3.3	ML
Monto Water	Monto Town Potable Water Supply Area	QG1.23	AS56	Volume water lost: potable water	18.5	ML
Monto Water	Monto Town Potable Water Supply Area	QG4.5	AS8	Water main breaks per 100 km water main	69.6	per 100 km water main
Monto Water	Monto Town Potable Water Supply Area	QG4.12	CS10	Water service complaints per 1000 connections	0	per 1000 connections
Monto Water	Monto Town Potable Water Supply Area	QG4.14	CS12	Water and sewerage billing and account complaints per 1000 connections	1.4	per 1000 connections
Monto Water	Monto Town Potable Water Supply Area	QG4.11	CS13	Water and sewerage complaints (all) per 1000 connections	1.4	per 1000 connections
Monto Water	Monto Town Potable Water Supply Area	QG4.7	CS17	Average frequency unplanned interruptions: water	167.1	per 1000 connections
Monto Water	Monto Town Potable Water Supply Area	QG1.13	CS2	Connected residential properties: water	0.623	000s
Monto Water	Monto Town Potable Water Supply Area	QG1.14	CS3	Connected non-residential properties: water	0.113	000s

SCHEME	SCHEME LONG NAME	KPI CODE	SWIM CODE	INDICATOR TITLE	VALUE	UNITS
Monto Water	Monto Town Potable Water Supply Area	QG4.8a	CS66	Percent CSS response target met: water incidents	100	%
Monto Water	Monto Town Potable Water Supply Area	QG4.10	CS9	Water quality complaints per 1000 connections	0	per 1000 connections
Monto Water	Monto Town Potable Water Supply Area	QG4.1(va lue)	PR3	Fixed charge: water value	684	\$/annum
Monto Water	Monto Town Potable Water Supply Area	QG4.1(te xt)	PR5	Fixed charge: water description	Per Connectio n	Text
Monto Water	Monto Town Potable Water Supply Area	QG1.8	WA1	Volume water sourced: surface water	NR	ML
Monto Water	Monto Town Potable Water Supply Area	QG1.9a	WA2	Volume water sourced: groundwater	173.9	ML
Monto Water	Monto Town Potable Water Supply Area	QG1.5	WA201	Maximum daily demand	1.3	ML/day
Monto Water	Monto Town Potable Water Supply Area	QG1.21	WA223	Volume all water imported: internal and external	NR	ML
Monto Water	Monto Town Potable Water Supply Area	QG1.22	WA224	Volume all water exported: internal and external	0	ML
Monto Water	Monto Town Potable Water Supply Area	QG1.6a	WA225	Volume potable water produced at a water treatment plant	172.9	ML
Monto Water	Monto Town Potable Water Supply Area	QG1.17a	WA32	Volume potable water supplied: residential	122.8	ML
Monto Water	Monto Town Potable Water Supply Area	QG1.18a	WA34	Volume potable water supplied: non-residential	30.8	ML
Monto Water	Monto Town Potable Water Supply Area	QG1.10	WA61	Volume water sourced: desalination marine water	NR	ML
Monto Water	Monto Town Potable Water Supply Area	QG1.12	WA7	Volume water sourced: all	173.9	ML
Monto Water	Monto Town Potable Water Supply Area	QG2.10a	WS11	Water restriction duration: PWCM	365	days
Monto Water	Monto Town Potable Water Supply Area	QG2.10b	WS12	Water restriction duration: Level 1	0	days
Monto Water	Monto Town Potable Water Supply Area	QG2.10c	WS13	Water restriction duration: Level 2	0	days
Monto Water	Monto Town Potable Water Supply Area	QG2.10d	WS14	Water restriction duration: Level 3	0	days
Monto Water	Monto Town Potable Water Supply Area	QG2.10e	WS15	Water restriction duration: Level 4	0	days
Monto Water	Monto Town Potable Water Supply Area	QG2.10f	WS16	Water restriction duration: Level 5	0	days
Monto Water	Monto Town Potable Water Supply Area	QG2.11a	WS17	Has asset management planning been undertaken in the last 10 yrs?	yes	yes/no
Monto Water	Monto Town Potable Water Supply Area	QG2.11b	WS18	Has drought management planning been undertaken in the last 10 yrs?	yes	yes/no
Monto Water	Monto Town Potable Water Supply Area	QG2.11c	WS19	Has water demand forecasts been developed or reviewed in the last 5 yrs?	yes	yes/no
Monto Water	Monto Town Potable Water Supply Area	QG2.11d	WS20	Has assessment of key capacity constraints of water infrastructure been undertaken in last 10 yrs?	yes	yes/no

SCHEME	SCHEME LONG NAME	KPI CODE	SWIM CODE	INDICATOR TITLE	VALUE	UNITS
Monto Water	Monto Town Potable Water Supply Area	QG2.11e	WS21	Has the timing for potential future supply augmentation been assessed in the last 10 yrs?	yes	yes/no
Monto Water	Monto Town Potable Water Supply Area	QG2.12	WS22	Months water supply remaining as at 30 June (KPI level)	5	1,2,3,4,5,6
Monto Water	Monto Town Potable Water Supply Area	QG2.13	WS23	Confidence water demand will be met: next 18 mths	high	high,fair,unsure, low,very low
Monto Water	Monto Town Potable Water Supply Area	QG2.14	WS24	Confidence water demand will be met: next 5 yrs	high	high,fair,unsure, low,very low
Monto Water	Monto Town Potable Water Supply Area	QG2.3	WS3	Available contingency supplies	yes	yes/no
Mount Perry Water	Mount Perry Town Potable Water Supply Area	QG1.4a	AS1	Number water treatment plants: providing full treatment	0	Count
Mount Perry Water	Mount Perry Town Potable Water Supply Area	QG1.1	AS2	Length water mains	15.8	km
Mount Perry Water	Mount Perry Town Potable Water Supply Area	QG1.4b	AS47	Capacity of water treatment plants	NR	ML/day
Mount Perry Water	Mount Perry Town Potable Water Supply Area	QG1.7	AS48	Total potable water storage volume	0.6	ML
Mount Perry Water	Mount Perry Town Potable Water Supply Area	QG1.23	AS56	Volume water lost: potable water	5.5	ML
Mount Perry Water	Mount Perry Town Potable Water Supply Area	QG4.5	AS8	Water main breaks per 100 km water main	0	per 100 km water main
Mount Perry Water	Mount Perry Town Potable Water Supply Area	QG4.12	CS10	Water service complaints per 1000 connections	13.5	per 1000 connections
Mount Perry Water	Mount Perry Town Potable Water Supply Area	QG4.14	CS12	Water and sewerage billing and account complaints per 1000 connections	0	per 1000 connections
Mount Perry Water	Mount Perry Town Potable Water Supply Area	QG4.11	CS13	Water and sewerage complaints (all) per 1000 connections	18	per 1000 connections
Mount Perry Water	Mount Perry Town Potable Water Supply Area	QG4.7	CS17	Average frequency unplanned interruptions: water	0	per 1000 connections
Mount Perry Water	Mount Perry Town Potable Water Supply Area	QG1.13	CS2	Connected residential properties: water	0.201	000s
Mount Perry Water	Mount Perry Town Potable Water Supply Area	QG1.14	CS3	Connected non-residential properties: water	0.021	000s
Mount Perry Water	Mount Perry Town Potable Water Supply Area	QG4.8a	CS66	Percent CSS response target met: water incidents	100	%

SCHEME	SCHEME LONG NAME	KPI CODE	SWIM CODE	INDICATOR TITLE	VALUE	UNITS
Mount Perry Water	Mount Perry Town Potable Water Supply Area	QG4.10	CS9	Water quality complaints per 1000 connections	4.5	per 1000 connections
Mount Perry Water	Mount Perry Town Potable Water Supply Area	QG4.1(value)	PR3	Fixed charge: water value	684	\$/annum
Mount Perry Water	Mount Perry Town Potable Water Supply Area	QG4.1(text)	PR5	Fixed charge: water description	Per Connection	Text
Mount Perry Water	Mount Perry Town Potable Water Supply Area	QG1.8	WA1	Volume water sourced: surface water	NR	ML
Mount Perry Water	Mount Perry Town Potable Water Supply Area	QG1.9a	WA2	Volume water sourced: groundwater	40.8	ML
Mount Perry Water	Mount Perry Town Potable Water Supply Area	QG1.5	WA201	Maximum daily demand	0.9	ML/day
Mount Perry Water	Mount Perry Town Potable Water Supply Area	QG1.21	WA223	Volume all water imported: internal and external	NR	ML
Mount Perry Water	Mount Perry Town Potable Water Supply Area	QG1.22	WA224	Volume all water exported: internal and external	0	ML
Mount Perry Water	Mount Perry Town Potable Water Supply Area	QG1.6a	WA225	Volume potable water produced at a water treatment plant	39.8	ML
Mount Perry Water	Mount Perry Town Potable Water Supply Area	QG1.17a	WA32	Volume potable water supplied: residential	29	ML
Mount Perry Water	Mount Perry Town Potable Water Supply Area	QG1.18a	WA34	Volume potable water supplied: non-residential	5.1	ML
Mount Perry Water	Mount Perry Town Potable Water Supply Area	QG1.10	WA61	Volume water sourced: desalination marine water	NR	ML
Mount Perry Water	Mount Perry Town Potable Water Supply Area	QG1.12	WA7	Volume water sourced: all	40.8	ML
Mount Perry Water	Mount Perry Town Potable Water Supply Area	QG2.10a	WS11	Water restriction duration: PWCM	365	days
Mount Perry Water	Mount Perry Town Potable Water Supply Area	QG2.10b	WS12	Water restriction duration: Level 1	0	days
Mount Perry Water	Mount Perry Town Potable Water Supply Area	QG2.10c	WS13	Water restriction duration: Level 2	0	days
Mount Perry Water	Mount Perry Town Potable Water Supply Area	QG2.10d	WS14	Water restriction duration: Level 3	0	days
Mount Perry Water	Mount Perry Town Potable Water Supply Area	QG2.10e	WS15	Water restriction duration: Level 4	0	days

SCHEME	SCHEME LONG NAME	KPI CODE	SWIM CODE	INDICATOR TITLE	VALUE	UNITS
Mount Perry Water	Mount Perry Town Potable Water Supply Area	QG2.10f	WS16	Water restriction duration: Level 5	0	days
Mount Perry Water	Mount Perry Town Potable Water Supply Area	QG2.11a	WS17	Has asset management planning been undertaken in the last 10 yrs?	yes	yes/no
Mount Perry Water	Mount Perry Town Potable Water Supply Area	QG2.11b	WS18	Has drought management planning been undertaken in the last 10 yrs?	yes	yes/no
Mount Perry Water	Mount Perry Town Potable Water Supply Area	QG2.11c	WS19	Has water demand forecasts been developed or reviewed in the last 5 yrs?	yes	yes/no
Mount Perry Water	Mount Perry Town Potable Water Supply Area	QG2.11d	WS20	Has assessment of key capacity constraints of water infrastructure been undertaken in last 10 yrs?	yes	yes/no
Mount Perry Water	Mount Perry Town Potable Water Supply Area	QG2.11e	WS21	Has the timing for potential future supply augmentation been assessed in the last 10 yrs?	yes	yes/no
Mount Perry Water	Mount Perry Town Potable Water Supply Area	QG2.12	WS22	Months water supply remaining as at 30 June (KPI level)	5	1,2,3,4,5,6
Mount Perry Water	Mount Perry Town Potable Water Supply Area	QG2.13	WS23	Confidence water demand will be met: next 18 mths	high	high,fair,unsure, low,very low
Mount Perry Water	Mount Perry Town Potable Water Supply Area	QG2.14	WS24	Confidence water demand will be met: next 5 yrs	high	high,fair,unsure, low,very low
Mount Perry Water	Mount Perry Town Potable Water Supply Area	QG2.3	WS3	Available contingency supplies	yes	yes/no
Mulgildie Water	Mulgildie Town Potable Water Supply Area	QG1.4a	AS1	Number water treatment plants: providing full treatment	1	Count
Mulgildie Water	Mulgildie Town Potable Water Supply Area	QG1.1	AS2	Length water mains	2.4	km
Mulgildie Water	Mulgildie Town Potable Water Supply Area	QG1.4b	AS47	Capacity of water treatment plants	0.2	ML/day
Mulgildie Water	Mulgildie Town Potable Water Supply Area	QG1.7	AS48	Total potable water storage volume	0.2	ML
Mulgildie Water	Mulgildie Town Potable Water Supply Area	QG1.23	AS56	Volume water lost: potable water	1.7	ML
Mulgildie Water	Mulgildie Town Potable Water Supply Area	QG4.5	AS8	Water main breaks per 100 km water main	373.4	per 100 km water main
Mulgildie Water	Mulgildie Town Potable Water Supply Area	QG4.12	CS10	Water service complaints per 1000 connections	0	per 1000 connections

SCHEME	SCHEME LONG NAME	KPI CODE	SWIM CODE	INDICATOR TITLE	VALUE	UNITS
Mulgildie Water	Mulgildie Town Potable Water Supply Area	QG4.14	CS12	Water and sewerage billing and account complaints per 1000 connections	0	per 1000 connections
Mulgildie Water	Mulgildie Town Potable Water Supply Area	QG4.11	CS13	Water and sewerage complaints (all) per 1000 connections	0	per 1000 connections
Mulgildie Water	Mulgildie Town Potable Water Supply Area	QG4.7	CS17	Average frequency unplanned interruptions: water	317.5	per 1000 connections
Mulgildie Water	Mulgildie Town Potable Water Supply Area	QG1.13	CS2	Connected residential properties: water	0.051	000s
Mulgildie Water	Mulgildie Town Potable Water Supply Area	QG1.14	CS3	Connected non-residential properties: water	0.012	000s
Mulgildie Water	Mulgildie Town Potable Water Supply Area	QG4.8a	CS66	Percent CSS response target met: water incidents	100	%
Mulgildie Water	Mulgildie Town Potable Water Supply Area	QG4.10	CS9	Water quality complaints per 1000 connections	0	per 1000 connections
Mulgildie Water	Mulgildie Town Potable Water Supply Area	QG4.1(va lue)	PR3	Fixed charge: water value	684	\$/annum
Mulgildie Water	Mulgildie Town Potable Water Supply Area	QG4.1(te xt)	PR5	Fixed charge: water description	Per Connection	Text
Mulgildie Water	Mulgildie Town Potable Water Supply Area	QG1.8	WA1	Volume water sourced: surface water	NR	ML
Mulgildie Water	Mulgildie Town Potable Water Supply Area	QG1.9a	WA2	Volume water sourced: groundwater	14.7	ML
Mulgildie Water	Mulgildie Town Potable Water Supply Area	QG1.5	WA201	Maximum daily demand	0.2	ML/day
Mulgildie Water	Mulgildie Town Potable Water Supply Area	QG1.21	WA223	Volume all water imported: internal and external	NR	ML
Mulgildie Water	Mulgildie Town Potable Water Supply Area	QG1.22	WA224	Volume all water exported: internal and external	0	ML
Mulgildie Water	Mulgildie Town Potable Water Supply Area	QG1.6a	WA225	Volume potable water produced at a water treatment plant	14.7	ML
Mulgildie Water	Mulgildie Town Potable Water Supply Area	QG1.17a	WA32	Volume potable water supplied: residential	11	ML
Mulgildie Water	Mulgildie Town Potable Water Supply Area	QG1.18a	WA34	Volume potable water supplied: non-residential	1.9	ML
Mulgildie Water	Mulgildie Town Potable Water Supply Area	QG1.10	WA61	Volume water sourced: desalination marine water	NR	ML

SCHEME	SCHEME LONG NAME	KPI CODE	SWIM CODE	INDICATOR TITLE	VALUE	UNITS
Mulgildie Water	Mulgildie Town Potable Water Supply Area	QG1.12	WA7	Volume water sourced: all	14.7	ML
Mulgildie Water	Mulgildie Town Potable Water Supply Area	QG2.10a	WS11	Water restriction duration: PWCM	365	days
Mulgildie Water	Mulgildie Town Potable Water Supply Area	QG2.10b	WS12	Water restriction duration: Level 1	0	days
Mulgildie Water	Mulgildie Town Potable Water Supply Area	QG2.10c	WS13	Water restriction duration: Level 2	0	days
Mulgildie Water	Mulgildie Town Potable Water Supply Area	QG2.10d	WS14	Water restriction duration: Level 3	0	days
Mulgildie Water	Mulgildie Town Potable Water Supply Area	QG2.10e	WS15	Water restriction duration: Level 4	0	days
Mulgildie Water	Mulgildie Town Potable Water Supply Area	QG2.10f	WS16	Water restriction duration: Level 5	0	days
Mulgildie Water	Mulgildie Town Potable Water Supply Area	QG2.11a	WS17	Has asset management planning been undertaken in the last 10 yrs?	yes	yes/no
Mulgildie Water	Mulgildie Town Potable Water Supply Area	QG2.11b	WS18	Has drought management planning been undertaken in the last 10 yrs?	yes	yes/no
Mulgildie Water	Mulgildie Town Potable Water Supply Area	QG2.11c	WS19	Has water demand forecasts been developed or reviewed in the last 5 yrs?	yes	yes/no
Mulgildie Water	Mulgildie Town Potable Water Supply Area	QG2.11d	WS20	Has assessment of key capacity constraints of water infrastructure been undertaken in last 10 yrs?	yes	yes/no
Mulgildie Water	Mulgildie Town Potable Water Supply Area	QG2.11e	WS21	Has the timing for potential future supply augmentation been assessed in the last 10 yrs?	yes	yes/no
Mulgildie Water	Mulgildie Town Potable Water Supply Area	QG2.12	WS22	Months water supply remaining as at 30 June (KPI level)	5	1,2,3,4,5,6
Mulgildie Water	Mulgildie Town Potable Water Supply Area	QG2.13	WS23	Confidence water demand will be met: next 18 mths	high	high,fair,unsure, low,very low
Mulgildie Water	Mulgildie Town Potable Water Supply Area	QG2.14	WS24	Confidence water demand will be met: next 5 yrs	high	high,fair,unsure, low,very low
Mulgildie Water	Mulgildie Town Potable Water Supply Area	QG2.3	WS3	Available contingency supplies	yes	yes/no
Mundubbera Water	Mundubbera Town Potable Water Supply Area	QG1.4a	AS1	Number water treatment plants: providing full treatment	1	Count

SCHEME	SCHEME LONG NAME	KPI CODE	SWIM CODE	INDICATOR TITLE	VALUE	UNITS
Mundubbera Water	Mundubbera Town Potable Water Supply Area	QG1.1	AS2	Length water mains	18.1	km
Mundubbera Water	Mundubbera Town Potable Water Supply Area	QG1.4b	AS47	Capacity of water treatment plants	2.6	ML/day
Mundubbera Water	Mundubbera Town Potable Water Supply Area	QG1.7	AS48	Total potable water storage volume	4	ML
Mundubbera Water	Mundubbera Town Potable Water Supply Area	QG1.23	AS56	Volume water lost: potable water	32	ML
Mundubbera Water	Mundubbera Town Potable Water Supply Area	QG4.5	AS8	Water main breaks per 100 km water main	11	per 100 km water main
Mundubbera Water	Mundubbera Town Potable Water Supply Area	QG4.12	CS10	Water service complaints per 1000 connections	0	per 1000 connections
Mundubbera Water	Mundubbera Town Potable Water Supply Area	QG4.14	CS12	Water and sewerage billing and account complaints per 1000 connections	0	per 1000 connections
Mundubbera Water	Mundubbera Town Potable Water Supply Area	QG4.11	CS13	Water and sewerage complaints (all) per 1000 connections	0	per 1000 connections
Mundubbera Water	Mundubbera Town Potable Water Supply Area	QG4.7	CS17	Average frequency unplanned interruptions: water	19.2	per 1000 connections
Mundubbera Water	Mundubbera Town Potable Water Supply Area	QG1.13	CS2	Connected residential properties: water	0.476	000s
Mundubbera Water	Mundubbera Town Potable Water Supply Area	QG1.14	CS3	Connected non-residential properties: water	0.097	000s
Mundubbera Water	Mundubbera Town Potable Water Supply Area	QG4.8a	CS66	Percent CSS response target met: water incidents	100	%
Mundubbera Water	Mundubbera Town Potable Water Supply Area	QG4.10	CS9	Water quality complaints per 1000 connections	0	per 1000 connections
Mundubbera Water	Mundubbera Town Potable Water Supply Area	QG4.1(va lue)	PR3	Fixed charge: water value	684	\$/annum
Mundubbera Water	Mundubbera Town Potable Water Supply Area	QG4.1(te xt)	PR5	Fixed charge: water description	Per Connectio n	Text
Mundubbera Water	Mundubbera Town Potable Water Supply Area	QG1.8	WA1	Volume water sourced: surface water	233.4	ML
Mundubbera Water	Mundubbera Town Potable Water Supply Area	QG1.9a	WA2	Volume water sourced: groundwater	NR	ML
Mundubbera Water	Mundubbera Town Potable Water Supply Area	QG1.5	WA201	Maximum daily demand	1.4	ML/day

SCHEME	SCHEME LONG NAME	KPI CODE	SWIM CODE	INDICATOR TITLE	VALUE	UNITS
Mundubbera Water	Mundubbera Town Potable Water Supply Area	QG1.21	WA223	Volume all water imported: internal and external	NR	ML
Mundubbera Water	Mundubbera Town Potable Water Supply Area	QG1.22	WA224	Volume all water exported: internal and external	0	ML
Mundubbera Water	Mundubbera Town Potable Water Supply Area	QG1.6a	WA225	Volume potable water produced at a water treatment plant	206.7	ML
Mundubbera Water	Mundubbera Town Potable Water Supply Area	QG1.17a	WA32	Volume potable water supplied: residential	112.9	ML
Mundubbera Water	Mundubbera Town Potable Water Supply Area	QG1.18a	WA34	Volume potable water supplied: non-residential	60.8	ML
Mundubbera Water	Mundubbera Town Potable Water Supply Area	QG1.10	WA61	Volume water sourced: desalination marine water	NR	ML
Mundubbera Water	Mundubbera Town Potable Water Supply Area	QG1.12	WA7	Volume water sourced: all	233.4	ML
Mundubbera Water	Mundubbera Town Potable Water Supply Area	QG2.10a	WS11	Water restriction duration: PWCM	365	days
Mundubbera Water	Mundubbera Town Potable Water Supply Area	QG2.10b	WS12	Water restriction duration: Level 1	0	days
Mundubbera Water	Mundubbera Town Potable Water Supply Area	QG2.10c	WS13	Water restriction duration: Level 2	0	days
Mundubbera Water	Mundubbera Town Potable Water Supply Area	QG2.10d	WS14	Water restriction duration: Level 3	0	days
Mundubbera Water	Mundubbera Town Potable Water Supply Area	QG2.10e	WS15	Water restriction duration: Level 4	0	days
Mundubbera Water	Mundubbera Town Potable Water Supply Area	QG2.10f	WS16	Water restriction duration: Level 5	0	days
Mundubbera Water	Mundubbera Town Potable Water Supply Area	QG2.11a	WS17	Has asset management planning been undertaken in the last 10 yrs?	yes	yes/no
Mundubbera Water	Mundubbera Town Potable Water Supply Area	QG2.11b	WS18	Has drought management planning been undertaken in the last 10 yrs?	yes	yes/no
Mundubbera Water	Mundubbera Town Potable Water Supply Area	QG2.11c	WS19	Has water demand forecasts been developed or reviewed in the last 5 yrs?	yes	yes/no
Mundubbera Water	Mundubbera Town Potable Water Supply Area	QG2.11d	WS20	Has assessment of key capacity constraints of water infrastructure been undertaken in last 10 yrs?	yes	yes/no
Mundubbera Water	Mundubbera Town Potable Water Supply Area	QG2.11e	WS21	Has the timing for potential future supply augmentation been assessed in the last 10 yrs?	yes	yes/no

SCHEME	SCHEME LONG NAME	KPI CODE	SWIM CODE	INDICATOR TITLE	VALUE	UNITS
Mundubbera Water	Mundubbera Town Potable Water Supply Area	QG2.12	WS22	Months water supply remaining as at 30 June (KPI level)	5	1,2,3,4,5,6
Mundubbera Water	Mundubbera Town Potable Water Supply Area	QG2.13	WS23	Confidence water demand will be met: next 18 mths	high	high,fair,unsure, low,very low
Mundubbera Water	Mundubbera Town Potable Water Supply Area	QG2.14	WS24	Confidence water demand will be met: next 5 yrs	high	high,fair,unsure, low,very low
Mundubbera Water	Mundubbera Town Potable Water Supply Area	QG2.3	WS3	Available contingency supplies	yes	yes/no

2 RECYCLED WATER SCHEMES

SCHEME	SCHEME LONG NAME	KPI CODE	SWIM CODE	INDICATOR TITLE	VALUE	UNITS
Biggenden effluent reuse	Biggenden effluent reuse	QG1.1	AS2	Length water mains	0.1	km
Biggenden effluent reuse	Biggenden effluent reuse	QG4.5	AS8	Water main breaks per 100 km water main	0	per 100 km water main
Biggenden effluent reuse	Biggenden effluent reuse	QG4.12	CS10	Water service complaints per 1000 connections	0	per 1000 connections
Biggenden effluent reuse	Biggenden effluent reuse	QG4.14	CS12	Water and sewerage billing and account complaints per 1000 connections	0	per 1000 connections
Biggenden effluent reuse	Biggenden effluent reuse	QG4.11	CS13	Water and sewerage complaints (all) per 1000 connections	0	per 1000 connections
Biggenden effluent reuse	Biggenden effluent reuse	QG1.13	CS2	Connected residential properties: water	NR	000s
Biggenden effluent reuse	Biggenden effluent reuse	QG1.14	CS3	Connected non-residential properties: water	0.001	000s
Biggenden effluent reuse	Biggenden effluent reuse	QG4.10	CS9	Water quality complaints per 1000 connections	0	per 1000 connections
Biggenden effluent reuse	Biggenden effluent reuse	QG4.1(value)	PR3	Fixed charge: water value	0	\$/annum
Biggenden effluent reuse	Biggenden effluent reuse	QG4.1(text)	PR5	Fixed charge: water description	NR	Text
Biggenden effluent reuse	Biggenden effluent reuse	QG1.21	WA223	Volume all water imported: internal and external	NR	ML
Biggenden effluent reuse	Biggenden effluent reuse	QG1.22	WA224	Volume all water exported: internal and external	NR	ML
Biggenden effluent reuse	Biggenden effluent reuse	QG1.11	WA26	Volume recycled sewage supplied: all	9.1	ML
Biggenden effluent reuse	Biggenden effluent reuse	QG1.12	WA7	Volume water sourced: all	9.1	ML
Gayndah effluent reuse	Gayndah Effluent Re-use	QG1.1	AS2	Length water mains	0.5	km
Gayndah effluent reuse	Gayndah Effluent Re-use	QG4.5	AS8	Water main breaks per 100 km water main	0	per 100 km water main
Gayndah effluent reuse	Gayndah Effluent Re-use	QG4.12	CS10	Water service complaints per 1000 connections	0	per 1000 connections
Gayndah effluent reuse	Gayndah Effluent Re-use	QG4.14	CS12	Water and sewerage billing and account complaints per 1000 connections	0	per 1000 connections
Gayndah effluent reuse	Gayndah Effluent Re-use	QG4.11	CS13	Water and sewerage complaints (all) per 1000 connections	0	per 1000 connections
Gayndah effluent reuse	Gayndah Effluent Re-use	QG1.13	CS2	Connected residential properties: water	NR	000s
Gayndah effluent reuse	Gayndah Effluent Re-use	QG1.14	CS3	Connected non-residential properties: water	0.001	000s
Gayndah effluent reuse	Gayndah Effluent Re-use	QG4.10	CS9	Water quality complaints per 1000 connections	0	per 1000 connections
Gayndah effluent reuse	Gayndah Effluent Re-use	QG4.1(value)	PR3	Fixed charge: water value	0	\$/annum
Gayndah effluent reuse	Gayndah Effluent Re-use	QG4.1(text)	PR5	Fixed charge: water description	NR	Text

SCHEME	SCHEME LONG NAME	KPI CODE	SWIM CODE	INDICATOR TITLE	VALUE	UNITS
Gayndah effluent reuse	Gayndah Effluent Re-use	QG1.21	WA223	Volume all water imported: internal and external	NR	ML
Gayndah effluent reuse	Gayndah Effluent Re-use	QG1.22	WA224	Volume all water exported: internal and external	NR	ML
Gayndah effluent reuse	Gayndah Effluent Re-use	QG1.11	WA26	Volume recycled sewage supplied: all	34.6	ML
Gayndah effluent reuse	Gayndah Effluent Re-use	QG1.12	WA7	Volume water sourced: all	34.6	ML
Monto effluent reuse	Monto Effluent Re-use	QG1.1	AS2	Length water mains	1.5	km
Monto effluent reuse	Monto Effluent Re-use	QG4.5	AS8	Water main breaks per 100 km water main	0	per 100 km water main
Monto effluent reuse	Monto Effluent Re-use	QG4.12	CS10	Water service complaints per 1000 connections	0	per 1000 connections
Monto effluent reuse	Monto Effluent Re-use	QG4.14	CS12	Water and sewerage billing and account complaints per 1000 connections	0	per 1000 connections
Monto effluent reuse	Monto Effluent Re-use	QG4.11	CS13	Water and sewerage complaints (all) per 1000 connections	0	per 1000 connections
Monto effluent reuse	Monto Effluent Re-use	QG1.13	CS2	Connected residential properties: water	NR	000s
Monto effluent reuse	Monto Effluent Re-use	QG1.14	CS3	Connected non-residential properties: water	0.001	000s
Monto effluent reuse	Monto Effluent Re-use	QG4.10	CS9	Water quality complaints per 1000 connections	0	per 1000 connections
Monto effluent reuse	Monto Effluent Re-use	QG4.1(value)	PR3	Fixed charge: water value	0	\$/annum
Monto effluent reuse	Monto Effluent Re-use	QG4.1(text)	PR5	Fixed charge: water description	NR	Text
Monto effluent reuse	Monto Effluent Re-use	QG1.21	WA223	Volume all water imported: internal and external	NR	ML
Monto effluent reuse	Monto Effluent Re-use	QG1.22	WA224	Volume all water exported: internal and external	NR	ML
Monto effluent reuse	Monto Effluent Re-use	QG1.11	WA26	Volume recycled sewage supplied: all	7	ML
Monto effluent reuse	Monto Effluent Re-use	QG1.12	WA7	Volume water sourced: all	81.9	ML
Mundubbera effluent reuse	Mundubbera Effluent Re-use	QG1.1	AS2	Length water mains	1.4	km
Mundubbera effluent reuse	Mundubbera Effluent Re-use	QG4.5	AS8	Water main breaks per 100 km water main	0	per 100 km water main
Mundubbera effluent reuse	Mundubbera Effluent Re-use	QG4.12	CS10	Water service complaints per 1000 connections	0	per 1000 connections
Mundubbera effluent reuse	Mundubbera Effluent Re-use	QG4.14	CS12	Water and sewerage billing and account complaints per 1000 connections	0	per 1000 connections
Mundubbera effluent reuse	Mundubbera Effluent Re-use	QG4.11	CS13	Water and sewerage complaints (all) per 1000 connections	0	per 1000 connections
Mundubbera effluent reuse	Mundubbera Effluent Re-use	QG1.13	CS2	Connected residential properties: water	NR	000s
Mundubbera effluent reuse	Mundubbera Effluent Re-use	QG1.14	CS3	Connected non-residential properties: water	0.001	000s
Mundubbera effluent reuse	Mundubbera Effluent Re-use	QG4.10	CS9	Water quality complaints per 1000 connections	0	per 1000 connections

SCHEME	SCHEME LONG NAME	KPI CODE	SWIM CODE	INDICATOR TITLE	VALUE	UNITS
Mundubbera effluent reuse	Mundubbera Effluent Re-use	QG4.1(value)	PR3	Fixed charge: water value	0	\$/annum
Mundubbera effluent reuse	Mundubbera Effluent Re-use	QG4.1(text)	PR5	Fixed charge: water description	NR	Text
Mundubbera effluent reuse	Mundubbera Effluent Re-use	QG1.21	WA223	Volume all water imported: internal and external	NR	ML
Mundubbera effluent reuse	Mundubbera Effluent Re-use	QG1.22	WA224	Volume all water exported: internal and external	NR	ML
Mundubbera effluent reuse	Mundubbera Effluent Re-use	QG1.11	WA26	Volume recycled sewage supplied: all	60.3	ML
Mundubbera effluent reuse	Mundubbera Effluent Re-use	QG1.12	WA7	Volume water sourced: all	60.3	ML

3 SEWERAGE SERVICE SCHEMES

SCHEME	SCHEME LONG NAME	KPI CODE	SWIM CODE	INDICATOR TITLE	VALUE	UNITS
Biggenden Sewerage	Biggenden Sewerage Service Area	QG4.6	AS39	Sewerage mains breaks/chokes per 100 km sewer main	0	per 100 km sewer mains
Biggenden Sewerage	Biggenden Sewerage Service Area	QG1.3	AS4	Number sewage treatment plants	1	Count
Biggenden Sewerage	Biggenden Sewerage Service Area	QG1.2	AS5	Length sewerage mains and channels	14.8	km
Biggenden Sewerage	Biggenden Sewerage Service Area	QG4.13	CS11	Sewerage service complaints per 1000 connections	0	per 1000 connections
Biggenden Sewerage	Biggenden Sewerage Service Area	QG4.14	CS12	Water and sewerage billing and account complaints per 1000 connections	0	per 1000 connections
Biggenden Sewerage	Biggenden Sewerage Service Area	QG4.11	CS13	Water and sewerage complaints (all) per 1000 connections	0	per 1000 connections
Biggenden Sewerage	Biggenden Sewerage Service Area	QG1.15	CS6	Connected residential properties: sewerage	0.36	000s
Biggenden Sewerage	Biggenden Sewerage Service Area	QG4.9a	CS65	Percent CSS response target met: sewerage incidents	100	%
Biggenden Sewerage	Biggenden Sewerage Service Area	QG1.16	CS7	Connected non-residential properties: sewerage	0.059	000s
Biggenden Sewerage	Biggenden Sewerage Service Area	QG4.2(value)	PR31	Fixed charge: sewerage value	666	\$/annum
Biggenden Sewerage	Biggenden Sewerage Service Area	QG4.2(text)	PR40	Fixed charge: sewerage description	First Pedestal	Text
Eidsvold Sewerage	Eidsvold Sewerage Service Area	QG4.6	AS39	Sewerage mains breaks/chokes per 100 km sewer main	9.1	per 100 km sewer mains
Eidsvold Sewerage	Eidsvold Sewerage Service Area	QG1.3	AS4	Number sewage treatment plants	1	Count
Eidsvold Sewerage	Eidsvold Sewerage Service Area	QG1.2	AS5	Length sewerage mains and channels	11	km

SCHEME	SCHEME LONG NAME	KPI CODE	SWIM CODE	INDICATOR TITLE	VALUE	UNITS
Eidsvold Sewerage	Eidsvold Sewerage Service Area	QG4.13	CS11	Sewerage service complaints per 1000 connections	0	per 1000 connections
Eidsvold Sewerage	Eidsvold Sewerage Service Area	QG4.14	CS12	Water and sewerage billing and account complaints per 1000 connections	0	per 1000 connections
Eidsvold Sewerage	Eidsvold Sewerage Service Area	QG4.11	CS13	Water and sewerage complaints (all) per 1000 connections	0	per 1000 connections
Eidsvold Sewerage	Eidsvold Sewerage Service Area	QG1.15	CS6	Connected residential properties: sewerage	0.189	000s
Eidsvold Sewerage	Eidsvold Sewerage Service Area	QG4.9a	CS65	Percent CSS response target met: sewerage incidents	100	%
Eidsvold Sewerage	Eidsvold Sewerage Service Area	QG1.16	CS7	Connected non-residential properties: sewerage	0.051	000s
Eidsvold Sewerage	Eidsvold Sewerage Service Area	QG4.2(value)	PR31	Fixed charge: sewerage value	666	\$/annum
Eidsvold Sewerage	Eidsvold Sewerage Service Area	QG4.2(text)	PR40	Fixed charge: sewerage description	First Pedestal	Text
Gayndah Sewerage	Gayndah Sewerage Service Area	QG4.6	AS39	Sewerage mains breaks/chokes per 100 km sewer main	0	per 100 km sewer mains
Gayndah Sewerage	Gayndah Sewerage Service Area	QG1.3	AS4	Number sewage treatment plants	1	Count
Gayndah Sewerage	Gayndah Sewerage Service Area	QG1.2	AS5	Length sewerage mains and channels	32.3	km
Gayndah Sewerage	Gayndah Sewerage Service Area	QG4.13	CS11	Sewerage service complaints per 1000 connections	0	per 1000 connections
Gayndah Sewerage	Gayndah Sewerage Service Area	QG4.14	CS12	Water and sewerage billing and account complaints per 1000 connections	0	per 1000 connections
Gayndah Sewerage	Gayndah Sewerage Service Area	QG4.11	CS13	Water and sewerage complaints (all) per 1000 connections	0	per 1000 connections
Gayndah Sewerage	Gayndah Sewerage Service Area	QG1.15	CS6	Connected residential properties: sewerage	0.735	000s
Gayndah Sewerage	Gayndah Sewerage Service Area	QG4.9a	CS65	Percent CSS response target met: sewerage incidents	100	%

SCHEME	SCHEME LONG NAME	KPI CODE	SWIM CODE	INDICATOR TITLE	VALUE	UNITS
Gayndah Sewerage	Gayndah Sewerage Service Area	QG1.16	CS7	Connected non-residential properties: sewerage	0.134	000s
Gayndah Sewerage	Gayndah Sewerage Service Area	QG4.2(value)	PR31	Fixed charge: sewerage value	666	\$/annum
Gayndah Sewerage	Gayndah Sewerage Service Area	QG4.2(text)	PR40	Fixed charge: sewerage description	First Pedestal	Text
Mingo Crossing Sewerage	Mingo Crossing Sewerage	QG4.6	AS39	Sewerage mains breaks/chokes per 100 km sewer main	0	per 100 km sewer mains
Mingo Crossing Sewerage	Mingo Crossing Sewerage	QG1.3	AS4	Number sewage treatment plants	1	Count
Mingo Crossing Sewerage	Mingo Crossing Sewerage	QG1.2	AS5	Length sewerage mains and channels	0.8	km
Mingo Crossing Sewerage	Mingo Crossing Sewerage	QG4.13	CS11	Sewerage service complaints per 1000 connections	0	per 1000 connections
Mingo Crossing Sewerage	Mingo Crossing Sewerage	QG4.14	CS12	Water and sewerage billing and account complaints per 1000 connections	0	per 1000 connections
Mingo Crossing Sewerage	Mingo Crossing Sewerage	QG4.11	CS13	Water and sewerage complaints (all) per 1000 connections	0	per 1000 connections
Mingo Crossing Sewerage	Mingo Crossing Sewerage	QG1.15	CS6	Connected residential properties: sewerage	0.001	000s
Mingo Crossing Sewerage	Mingo Crossing Sewerage	QG4.9a	CS65	Percent CSS response target met: sewerage incidents	100	%
Mingo Crossing Sewerage	Mingo Crossing Sewerage	QG1.16	CS7	Connected non-residential properties: sewerage	0.001	000s
Mingo Crossing Sewerage	Mingo Crossing Sewerage	QG4.2(value)	PR31	Fixed charge: sewerage value	NR	\$/annum
Mingo Crossing Sewerage	Mingo Crossing Sewerage	QG4.2(text)	PR40	Fixed charge: sewerage description	NR	Text
Monto Sewerage	Monto Sewerage Service Area	QG4.6	AS39	Sewerage mains breaks/chokes per 100 km sewer main	23	per 100 km sewer mains
Monto Sewerage	Monto Sewerage Service Area	QG1.3	AS4	Number sewage treatment plants	1	Count

SCHEME	SCHEME LONG NAME	KPI CODE	SWIM CODE	INDICATOR TITLE	VALUE	UNITS
Monto Sewerage	Monto Sewerage Service Area	QG1.2	AS5	Length sewerage mains and channels	21.8	km
Monto Sewerage	Monto Sewerage Service Area	QG4.13	CS11	Sewerage service complaints per 1000 connections	1.5	per 1000 connections
Monto Sewerage	Monto Sewerage Service Area	QG4.14	CS12	Water and sewerage billing and account complaints per 1000 connections	0	per 1000 connections
Monto Sewerage	Monto Sewerage Service Area	QG4.11	CS13	Water and sewerage complaints (all) per 1000 connections	1.5	per 1000 connections
Monto Sewerage	Monto Sewerage Service Area	QG1.15	CS6	Connected residential properties: sewerage	0.567	000s
Monto Sewerage	Monto Sewerage Service Area	QG4.9a	CS65	Percent CSS response target met: sewerage incidents	100	%
Monto Sewerage	Monto Sewerage Service Area	QG1.16	CS7	Connected non-residential properties: sewerage	0.094	000s
Monto Sewerage	Monto Sewerage Service Area	QG4.2(value)	PR31	Fixed charge: sewerage value	666	\$/annum
Monto Sewerage	Monto Sewerage Service Area	QG4.2(text)	PR40	Fixed charge: sewerage description	First Pedestal	Text
Mount Perry Sewerage	Mount Perry Sewerage Treatment Plant	QG4.6	AS39	Sewerage mains breaks/chokes per 100 km sewer main	0	per 100 km sewer mains
Mount Perry Sewerage	Mount Perry Sewerage Treatment Plant	QG1.3	AS4	Number sewage treatment plants	1	Count
Mount Perry Sewerage	Mount Perry Sewerage Treatment Plant	QG1.2	AS5	Length sewerage mains and channels	0.5	km
Mount Perry Sewerage	Mount Perry Sewerage Treatment Plant	QG4.13	CS11	Sewerage service complaints per 1000 connections	0	per 1000 connections
Mount Perry Sewerage	Mount Perry Sewerage Treatment Plant	QG4.14	CS12	Water and sewerage billing and account complaints per 1000 connections	0	per 1000 connections
Mount Perry Sewerage	Mount Perry Sewerage Treatment Plant	QG4.11	CS13	Water and sewerage complaints (all) per 1000 connections	0	per 1000 connections
Mount Perry Sewerage	Mount Perry Sewerage Treatment Plant	QG1.15	CS6	Connected residential properties: sewerage	0	000s
Mount Perry Sewerage	Mount Perry Sewerage Treatment Plant	QG4.9a	CS65	Percent CSS response target met: sewerage incidents	100	%

SCHEME	SCHEME LONG NAME	KPI CODE	SWIM CODE	INDICATOR TITLE	VALUE	UNITS
Mount Perry Sewerage	Mount Perry Sewerage Treatment Plant	QG1.16	CS7	Connected non-residential properties: sewerage	0.002	000s
Mount Perry Sewerage	Mount Perry Sewerage Treatment Plant	QG4.2(value)	PR31	Fixed charge: sewerage value	NR	\$/annum
Mount Perry Sewerage	Mount Perry Sewerage Treatment Plant	QG4.2(text)	PR40	Fixed charge: sewerage description	NR	Text
Mundubbera Sewerage	Mundubbera Sewerage Service Area	QG4.6	AS39	Sewerage mains breaks/chokes per 100 km sewer main	43.3	per 100 km sewer mains
Mundubbera Sewerage	Mundubbera Sewerage Service Area	QG1.3	AS4	Number sewage treatment plants	1	Count
Mundubbera Sewerage	Mundubbera Sewerage Service Area	QG1.2	AS5	Length sewerage mains and channels	16.2	km
Mundubbera Sewerage	Mundubbera Sewerage Service Area	QG4.13	CS11	Sewerage service complaints per 1000 connections	0	per 1000 connections
Mundubbera Sewerage	Mundubbera Sewerage Service Area	QG4.14	CS12	Water and sewerage billing and account complaints per 1000 connections	0	per 1000 connections
Mundubbera Sewerage	Mundubbera Sewerage Service Area	QG4.11	CS13	Water and sewerage complaints (all) per 1000 connections	0	per 1000 connections
Mundubbera Sewerage	Mundubbera Sewerage Service Area	QG1.15	CS6	Connected residential properties: sewerage	0.446	000s
Mundubbera Sewerage	Mundubbera Sewerage Service Area	QG4.9a	CS65	Percent CSS response target met: sewerage incidents	100	%
Mundubbera Sewerage	Mundubbera Sewerage Service Area	QG1.16	CS7	Connected non-residential properties: sewerage	0.102	000s
Mundubbera Sewerage	Mundubbera Sewerage Service Area	QG4.2(value)	PR31	Fixed charge: sewerage value	666	\$/annum
Mundubbera Sewerage	Mundubbera Sewerage Service Area	QG4.2(text)	PR40	Fixed charge: sewerage description	First Pedestal	Text

4 NORTH BURNETT REGIONAL COUNCIL WATER SERVICE PROVIDER REGION WIDE REPORTING

SCHEME	SCHEME LONG NAME	KPI CODE	SWIM CODE	INDICATOR TITLE	VALUE	UNITS
North Burnett Regional Council WSP-wide	North Burnett Regional Council WSP-wide	QG1.4a	AS1	Number water treatment plants: providing full treatment	6	Count
North Burnett Regional Council WSP-wide	North Burnett Regional Council WSP-wide	QG1.1	AS2	Length water mains	135.3	km
North Burnett Regional Council WSP-wide	North Burnett Regional Council WSP-wide	QG4.6	AS39	Sewerage mains breaks/chokes per 100 km sewer main	13.4	per 100 km sewer mains
North Burnett Regional Council WSP-wide	North Burnett Regional Council WSP-wide	QG1.3	AS4	Number sewage treatment plants	7	Count
North Burnett Regional Council WSP-wide	North Burnett Regional Council WSP-wide	QG1.4b	AS47	Capacity of water treatment plants	9.07	ML/day
North Burnett Regional Council WSP-wide	North Burnett Regional Council WSP-wide	QG1.7	AS48	Total potable water storage volume	15.273	ML
North Burnett Regional Council WSP-wide	North Burnett Regional Council WSP-wide	QG1.2	AS5	Length sewerage mains and channels	97.2	km
North Burnett Regional Council WSP-wide	North Burnett Regional Council WSP-wide	QG1.23	AS56	Volume water lost: potable water	160.9	ML
North Burnett Regional Council WSP-wide	North Burnett Regional Council WSP-wide	QG4.5	AS8	Water main breaks per 100 km water main	35.5	per 100 km water main
North Burnett Regional Council WSP-wide	North Burnett Regional Council WSP-wide	QG4.12	CS10	Water service complaints per 1000 connections	1.2	per 1000 connections
North Burnett Regional Council WSP-wide	North Burnett Regional Council WSP-wide	QG4.13	CS11	Sewerage service complaints per 1000 connections	0.4	per 1000 connections
North Burnett Regional Council WSP-wide	North Burnett Regional Council WSP-wide	QG4.14	CS12	Water and sewerage billing and account complaints per 1000 connections	0.6	per 1000 connections
North Burnett Regional Council WSP-wide	North Burnett Regional Council WSP-wide	QG4.11	CS13	Water and sewerage complaints (all) per 1000 connections	3.8	per 1000 connections
North Burnett Regional Council WSP-wide	North Burnett Regional Council WSP-wide	QG4.7	CS17	Average frequency unplanned interruptions: water	410.5	per 1000 connections
North Burnett Regional Council WSP-wide	North Burnett Regional Council WSP-wide	QG1.13	CS2	Connected residential properties: water	2.854	000s
North Burnett Regional Council WSP-wide	North Burnett Regional Council WSP-wide	QG1.14	CS3	Connected non-residential properties: water	0.527	000s

SCHEME	SCHEME LONG NAME	KPI CODE	SWIM CODE	INDICATOR TITLE	VALUE	UNITS
North Burnett Regional Council WSP-wide	North Burnett Regional Council WSP-wide	QG1.15	CS6	Connected residential properties: sewerage	2.298	000s
North Burnett Regional Council WSP-wide	North Burnett Regional Council WSP-wide	QG4.9a	CS65	Percent CSS response target met: sewerage incidents	100	%
North Burnett Regional Council WSP-wide	North Burnett Regional Council WSP-wide	QG4.8a	CS66	Percent CSS response target met: water incidents	100	%
North Burnett Regional Council WSP-wide	North Burnett Regional Council WSP-wide	QG1.16	CS7	Connected non-residential properties: sewerage	0.443	000s
North Burnett Regional Council WSP-wide	North Burnett Regional Council WSP-wide	QG4.10	CS9	Water quality complaints per 1000 connections	1.8	per 1000 connections
North Burnett Regional Council WSP-wide	North Burnett Regional Council WSP-wide	QG3.9	FN1	Revenue: all (NPR) water	3871.395	\$,000
North Burnett Regional Council WSP-wide	North Burnett Regional Council WSP-wide	QG3.6	FN10	Nominal written down replacement cost: fixed sewerage assets	28927.83	\$,000
North Burnett Regional Council WSP-wide	North Burnett Regional Council WSP-wide	QG3.11	FN11	Costs: operating water per connection	984.68	\$/connection
North Burnett Regional Council WSP-wide	North Burnett Regional Council WSP-wide	QG3.12	FN12	Costs: operating sewerage per connection	428.25	\$/connection
North Burnett Regional Council WSP-wide	North Burnett Regional Council WSP-wide	QG3.1	FN14	Capital expenditure: water supply	1083.73	\$,000
North Burnett Regional Council WSP-wide	North Burnett Regional Council WSP-wide	QG3.2	FN15	Capital expenditure: sewerage	700.05	\$,000
North Burnett Regional Council WSP-wide	North Burnett Regional Council WSP-wide	QG3.10	FN2	Revenue: all (NPR) sewerage	2434.278	\$,000
North Burnett Regional Council WSP-wide	North Burnett Regional Council WSP-wide	QG3.3	FN26	Capital works grants: water	0	\$,000
North Burnett Regional Council WSP-wide	North Burnett Regional Council WSP-wide	QG3.4	FN27	Capital works grants: sewerage	0	\$,000
North Burnett Regional Council WSP-wide	North Burnett Regional Council WSP-wide	QG3.11a	FN32	Costs: operating water (NPR)	3329.21	\$,000
North Burnett Regional Council WSP-wide	North Burnett Regional Council WSP-wide	QG3.12a	FN33	Costs: operating sewerage	1173.829	\$,000
North Burnett Regional Council WSP-wide	North Burnett Regional Council WSP-wide	QG3.21	FN49	Costs: any other water	0	\$,000
North Burnett Regional Council WSP-wide	North Burnett Regional Council WSP-wide	QG3.22	FN50	Costs: any other sewerage	0	\$,000

SCHEME	SCHEME LONG NAME	KPI CODE	SWIM CODE	INDICATOR TITLE	VALUE	UNITS
North Burnett Regional Council WSP-wide	North Burnett Regional Council WSP-wide	QG3.7	FN74	Current replacement costs: fixed water assets	74265.42	\$,000
North Burnett Regional Council WSP-wide	North Burnett Regional Council WSP-wide	QG3.8	FN75	Current replacement costs: fixed sewerage assets	60137.48	\$,000
North Burnett Regional Council WSP-wide	North Burnett Regional Council WSP-wide	QG3.13	FN76	Costs: maintenance water	2301.25	\$,000
North Burnett Regional Council WSP-wide	North Burnett Regional Council WSP-wide	QG3.14	FN77	Costs: maintenance sewerage	288.63	\$,000
North Burnett Regional Council WSP-wide	North Burnett Regional Council WSP-wide	QG3.15	FN78	Current cost depreciation: water	1467.32	\$,000
North Burnett Regional Council WSP-wide	North Burnett Regional Council WSP-wide	QG3.16	FN79	Current cost depreciation: sewerage	825.6	\$,000
North Burnett Regional Council WSP-wide	North Burnett Regional Council WSP-wide	QG3.17	FN80	Previous 5 year average annual renewals expenditure: water	547.86	\$,000
North Burnett Regional Council WSP-wide	North Burnett Regional Council WSP-wide	QG3.18	FN81	Previous 5 year average annual renewals expenditure: sewerage	780.28	\$,000
North Burnett Regional Council WSP-wide	North Burnett Regional Council WSP-wide	QG3.19	FN82	Forecast 5 year average annual renewals expenditure: water	1300	\$,000
North Burnett Regional Council WSP-wide	North Burnett Regional Council WSP-wide	QG3.20	FN83	Forecast 5 year average annual renewals expenditure: sewerage	800	\$,000
North Burnett Regional Council WSP-wide	North Burnett Regional Council WSP-wide	QG3.5	FN9	Nominal written down replacement cost: fixed water assets	38346.23	\$,000
North Burnett Regional Council WSP-wide	North Burnett Regional Council WSP-wide	QG4.1(value)	PR3	Fixed charge: water value	684	\$/annum
North Burnett Regional Council WSP-wide	North Burnett Regional Council WSP-wide	QG4.2(value)	PR31	Fixed charge: sewerage value	666	\$/annum
North Burnett Regional Council WSP-wide	North Burnett Regional Council WSP-wide	QG4.2(text)	PR40	Fixed charge: sewerage description	First Pedestal	Text
North Burnett Regional Council WSP-wide	North Burnett Regional Council WSP-wide	QG4.3	PR47	Annual bill based on 200kL/a: water+sewerage	1760	\$
North Burnett Regional Council WSP-wide	North Burnett Regional Council WSP-wide	QG4.4	PR48	Typical residential bill: water+sewerage	1881.9	\$
North Burnett Regional Council WSP-wide	North Burnett Regional Council WSP-wide	QG4.1(text)	PR5	Fixed charge: water description	Per Connection	Text
North Burnett Regional Council WSP-wide	North Burnett Regional Council WSP-wide	QG1.8	WA1	Volume water sourced: surface water	638.1	ML

SCHEME	SCHEME LONG NAME	KPI CODE	SWIM CODE	INDICATOR TITLE	VALUE	UNITS
North Burnett Regional Council WSP-wide	North Burnett Regional Council WSP-wide	QG1.9a	WA2	Volume water sourced: groundwater	447.3	ML
North Burnett Regional Council WSP-wide	North Burnett Regional Council WSP-wide	QG1.5	WA201	Maximum daily demand	6.9	ML/day
North Burnett Regional Council WSP-wide	North Burnett Regional Council WSP-wide	QG1.21	WA223	Volume all water imported: internal and external	0.6	ML
North Burnett Regional Council WSP-wide	North Burnett Regional Council WSP-wide	QG1.22	WA224	Volume all water exported: internal and external	5.6	ML
North Burnett Regional Council WSP-wide	North Burnett Regional Council WSP-wide	QG1.6a	WA225	Volume potable water produced at a water treatment plant	997.6	ML
North Burnett Regional Council WSP-wide	North Burnett Regional Council WSP-wide	QG1.11	WA26	Volume recycled sewage supplied: all	111.1	ML
North Burnett Regional Council WSP-wide	North Burnett Regional Council WSP-wide	QG1.17a	WA32	Volume potable water supplied: residential	579.2	ML
North Burnett Regional Council WSP-wide	North Burnett Regional Council WSP-wide	QG1.18a	WA34	Volume potable water supplied: non-residential	252.6	ML
North Burnett Regional Council WSP-wide	North Burnett Regional Council WSP-wide	QG1.10	WA61	Volume water sourced: desalination marine water	0	ML
North Burnett Regional Council WSP-wide	North Burnett Regional Council WSP-wide	QG1.12	WA7	Volume water sourced: all	1197	ML
North Burnett Regional Council WSP-wide	North Burnett Regional Council WSP-wide	QG1.17b	WA91	Volume raw-PT water supplied: residential	NR	ML
North Burnett Regional Council WSP-wide	North Burnett Regional Council WSP-wide	QG1.18b	WA92	Volume raw-PT water supplied: non-residential	NR	ML
North Burnett Regional Council WSP-wide	North Burnett Regional Council WSP-wide	QG1.20	WF1	Total full-time equivalent water+sewerage employees	16	FTEs
North Burnett Regional Council WSP-wide	North Burnett Regional Council WSP-wide	QG2.10a	WS11	Water restriction duration: PWCM	365	days
North Burnett Regional Council WSP-wide	North Burnett Regional Council WSP-wide	QG2.10b	WS12	Water restriction duration: Level 1	0	days
North Burnett Regional Council WSP-wide	North Burnett Regional Council WSP-wide	QG2.10c	WS13	Water restriction duration: Level 2	0	days
North Burnett Regional Council WSP-wide	North Burnett Regional Council WSP-wide	QG2.10d	WS14	Water restriction duration: Level 3	0	days
North Burnett Regional Council WSP-wide	North Burnett Regional Council WSP-wide	QG2.10e	WS15	Water restriction duration: Level 4	0	days

SCHEME	SCHEME LONG NAME	KPI CODE	SWIM CODE	INDICATOR TITLE	VALUE	UNITS
North Burnett Regional Council WSP-wide	North Burnett Regional Council WSP-wide	QG2.10f	WS16	Water restriction duration: Level 5	0	days
North Burnett Regional Council WSP-wide	North Burnett Regional Council WSP-wide	QG2.11a	WS17	Has asset management planning been undertaken in the last 10 yrs?	yes	yes/no
North Burnett Regional Council WSP-wide	North Burnett Regional Council WSP-wide	QG2.11b	WS18	Has drought management planning been undertaken in the last 10 yrs?	yes	yes/no
North Burnett Regional Council WSP-wide	North Burnett Regional Council WSP-wide	QG2.11c	WS19	Has water demand forecasts been developed or reviewed in the last 5 yrs?	yes	yes/no
North Burnett Regional Council WSP-wide	North Burnett Regional Council WSP-wide	QG2.11d	WS20	Has assessment of key capacity constraints of water infrastructure been undertaken in last 10 yrs?	no	yes/no
North Burnett Regional Council WSP-wide	North Burnett Regional Council WSP-wide	QG2.11e	WS21	Has the timing for potential future supply augmentation been assessed in the last 10 yrs?	no	yes/no
North Burnett Regional Council WSP-wide	North Burnett Regional Council WSP-wide	QG2.12	WS22	Months water supply remaining as at 30 June (KPI level)	5	1,2,3,4,5,6
North Burnett Regional Council WSP-wide	North Burnett Regional Council WSP-wide	QG2.13	WS23	Confidence water demand will be met: next 18 mths	high	high,fair,unsure low,very low
North Burnett Regional Council WSP-wide	North Burnett Regional Council WSP-wide	QG2.14	WS24	Confidence water demand will be met: next 5 yrs	high	high,fair,unsure low,very low
North Burnett Regional Council WSP-wide	North Burnett Regional Council WSP-wide	QG2.3	WS3	Available contingency supplies	yes	yes/no